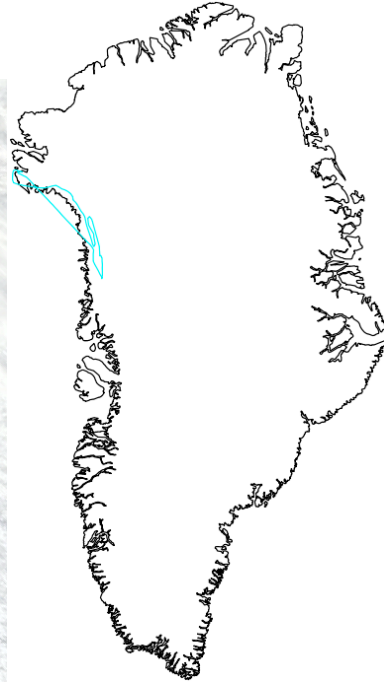
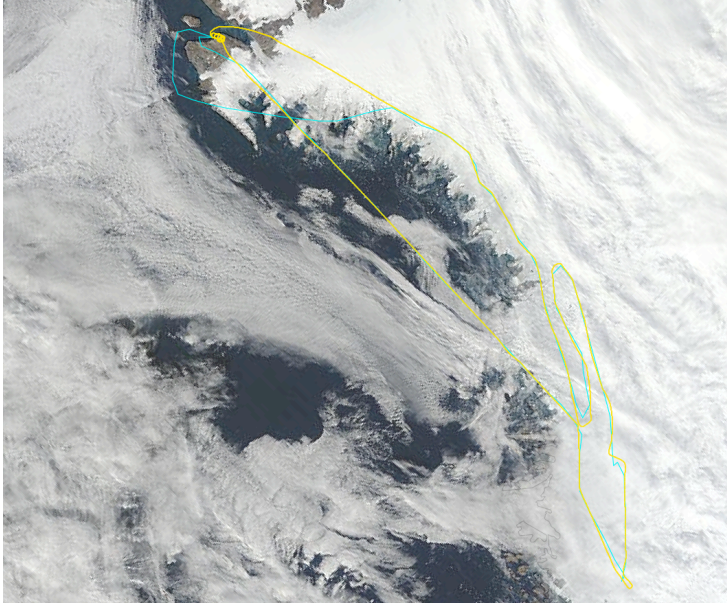


08/17/2015

Mission: SIMPL & AVIRIS-NG COORDINATED 'Coast Parallel; Frozen Melt Ponds'



Weather: generally a bit cloudy, especially at southern extent; flight was changed en route to lines farther north; melt ponds were starting to freeze over

Instruments: SIMPL, AVIRIS-NG; Applanix, ASDs, nadir camera: all OK; Best flight for frozen-over melt ponds.

Day flight

Dynamic Aviation C-12 (3.9 hours; Rob Green flew on this mission)

Requested AVIRIS-NG sample altitude: 25,000 ft AGL

NASA Langley UC-12B (3.9 hours)

Requested SIMPL sample altitude: **9,500 ft AGL over the ice sheet;**
6,500 ft AGL over water

SIMPL points of interest:

Time (UTC)	Description
11:15	Applanix on
15:05	P/R maneuver at 6,500 ft AGL
15:45	Applanix off