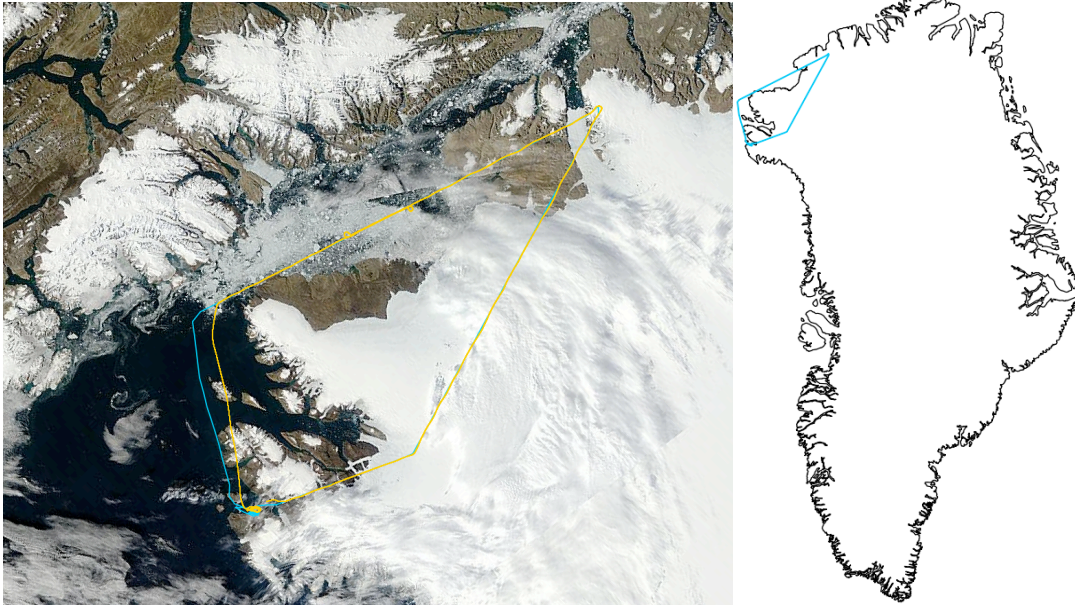


08/14/2015

**Mission: SIMPL & AVIRIS-NG COORDINATED 'ICESat-2 Line and Sea Ice, Southern Nares Strait'**



Red track: LaRC UC-12B; Blue track: Dynamic Aviation C-12  
Weather: generally clear; shadow on ICESat-2 (and IceBridge) line

Instruments: SIMPL, AVIRIS-NG; Applanix, ASDs, nadir camera:  
down-looking ASD saturated over sea ice; Applanix logged only to internal storage and filled disk; ASD and AVIRIS-NG calibration flight; multiple passes over Thule runway ramp; Rob Green and Chris Crawford on ramp with field ASD Best flight for pack ice in Nares Strait.

Day flight

Dynamic Aviation C-12 (4.0 hours)

Requested AVIRIS-NG sample altitude: 25,000 ft AGL

NASA Langley UC-12B (4.0 hours)

Requested SIMPL sample altitude: **10,500 ft AGL over the ice sheet;**  
**9,500 ft AGL over sea ice**

SIMPL points of interest:

Time (UTC)	Description
11:30	Applanix on
12:39	P/R maneuver on ice sheet at 12,000 ft AGL
13:31	P/R maneuver over water at 9,500 ft AGL
13:45	Variable altitudes AGL Start
14:15	Variable altitudes AGL End
16:00	Applanix off