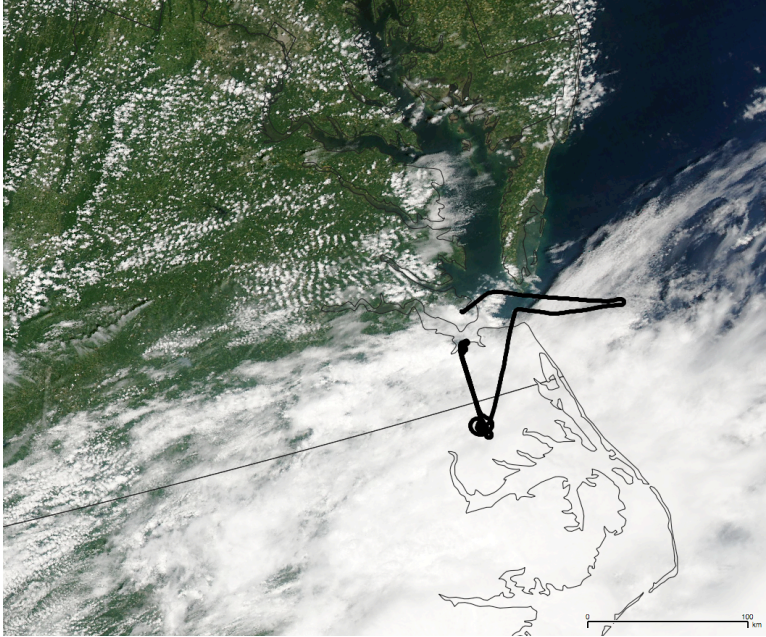


07/23/2015

Mission: LaRC KING AIR ONLY (VA) 'Second Check Flight'



Weather: Generally pretty good

Instruments: SIMPL, Applanix, ASDs, nadir camera:
ASD integrated but not run; camera images slightly saturated; SIMPL had 1 blue screen/restart; Applanix had a hiccup at the beginning of flight; aircraft had 1 load shed

Day flight

NASA Langley UC-12B (2.0 hours)

Requested SIMPL sample altitude: **8,500 ft AGL (with variation for calibration)**

SIMPL points of interest:

Time (UTC)	Description
13:15	Applanix on (issues at startup)
13:30	Variable altitudes AGL Start
14:45	Variable altitudes AGL End
14:55	P/R maneuver
15:02	P/R maneuver
15:45	Applanix off