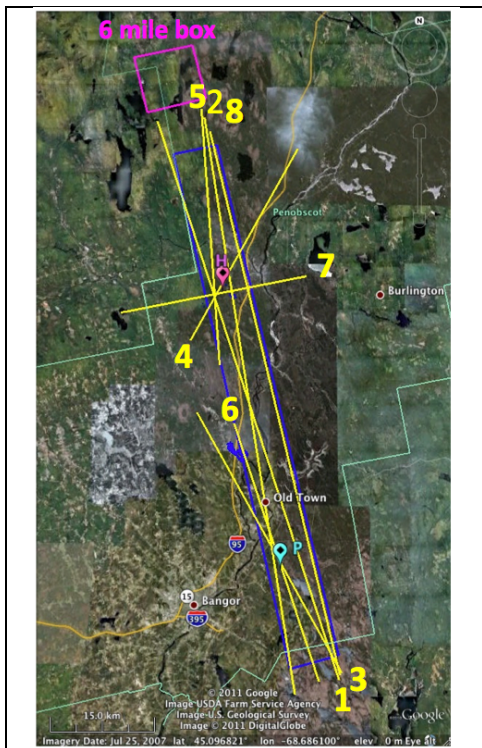


August 31, 2011 Eco3D SIMPL Data Flight Location = Maine

Label = 31Aug2011_SIMPL_ME

Comments = Maine: Howland and Penobscot Forests, SIMPL on during CAR circle at 0.2, 1.0 and 2.6 km over Howland flux tower and SIMPL Lines 5 and 6 at 2.0 km

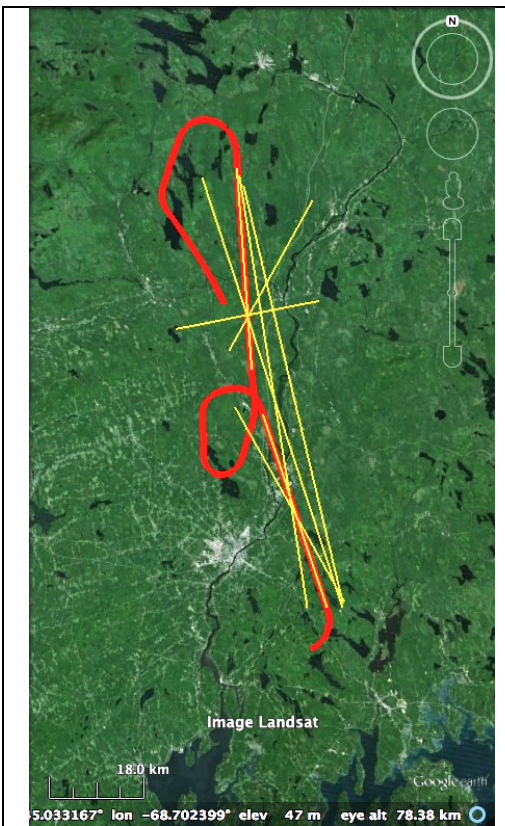
SIMPL Line	~ Start Time (UTM)	~ End Time (UTM)	~ Range (km)	Field Site Targets (measured by GSFC Laboratory for Biospheric Sciences)
5 N to S	13:58:38	14:03:10	1.9	2009 plots: h12, 2010 plots: H09, h12 Howland stem map
6 NW to SE	14:10:28	14:14:58	1.9	2009 plots: p01, p04, p05, p07, p11 2010 plots: p1, p4, p5, p7, p11



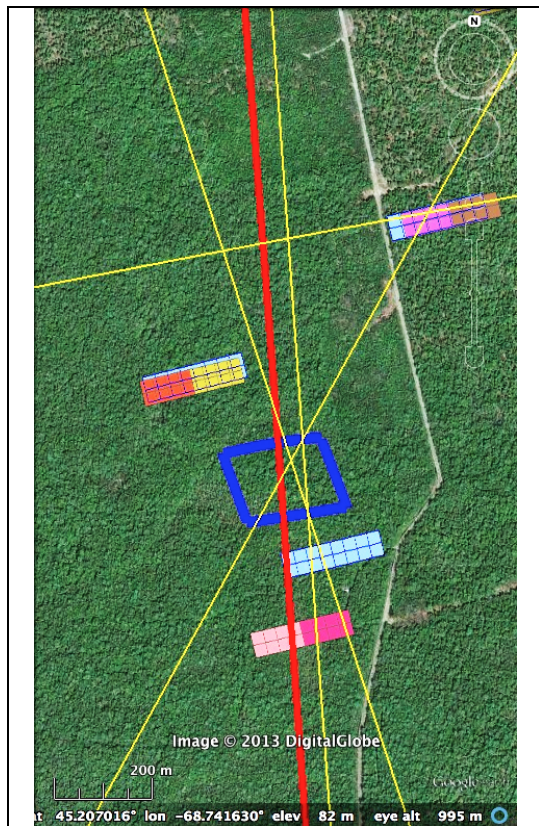
2011 Eco3D SIMPL flight lines at Howland (H) and Penobscot (P) forests, Maine.

Line	Point	N Lat Deg	Decimal Minutes	W Lon Deg	Decimal Minutes
Line 1	S	44	42.33	68	30.71
Line 1	N	45	26.97	68	51.25
Line 2	N	45	27.23	68	45.73
Line 2	S	44	41.24	68	35.57
Line 3	SE	44	42.88	68	30.43
Line 3	NW	45	3.11	68	46.43
Line 4	SW	45	8.84	68	47.25
Line 4	NE	45	24.63	68	34.83
Line 5	N	45	28.03	68	46.11
Line 5	S	45	6.84	68	43.87
Line 6	NW	45	2.21	68	42.23
Line 6	SE	44	42.20	68	32.91
Line 7	E	45	14.08	68	33.90
Line 7	W	45	11.12	68	55.13
Line 8	N	45	28.03	68	46.11
Line 8	S	45	4.99	68	43.70

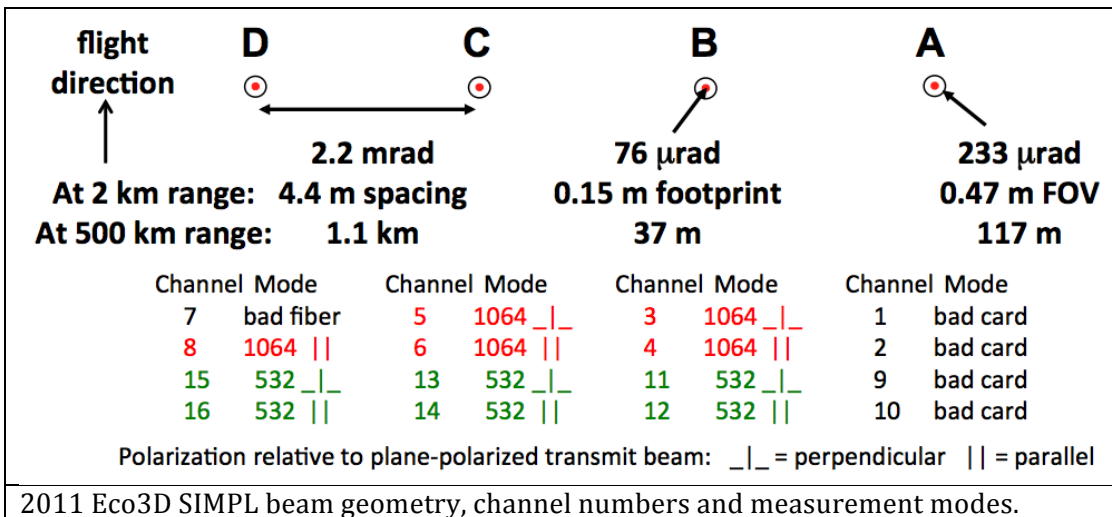
2011 Eco3D SIMPL flight line start and end co-ordinates at Howland and Penobscot forests, Maine.



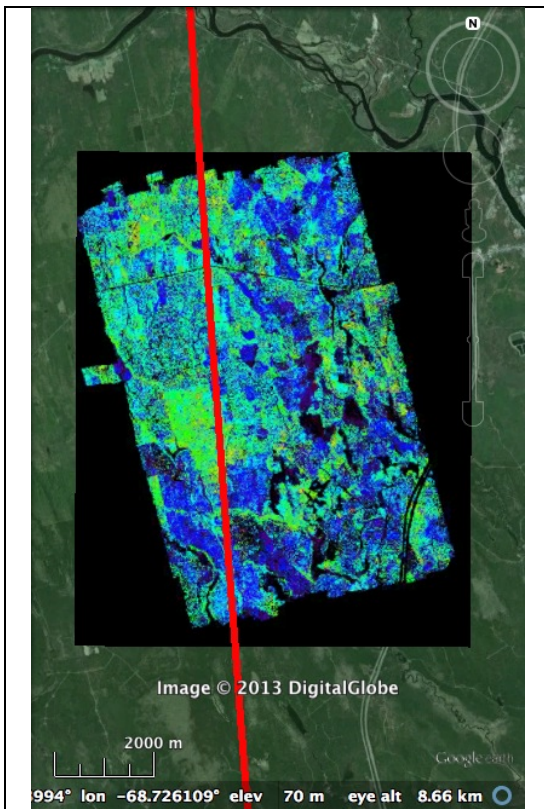
2011 Eco3D SIMPL flight lines (yellow) and flight path (red) on August 31, 2011 at Howland and Penobscot forests, Maine.



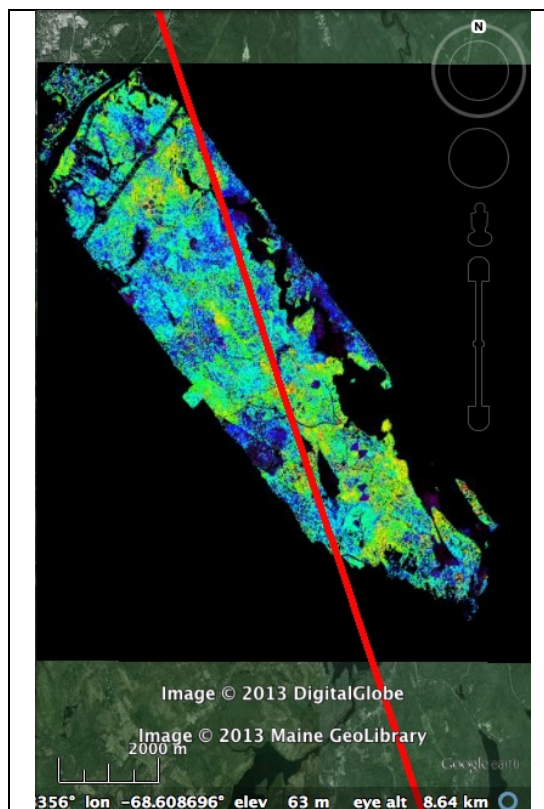
2011 Eco3D SIMPL flight lines (yellow) and flight path (red) on August 31, 2011 across Howland stem map (blue rectangle) and nearby field plots.



2011 Eco3D SIMPL beam geometry, channel numbers and measurement modes.



2011 Eco3D SIMPL flight path (red) on Aug. 31, 2011 across Howland forest, Maine G-LiHT canopy height model



2011 Eco3D SIMPL flight path (red) on Aug. 31, 2011 across Penobscot forest, Maine G-LiHT canopy height model