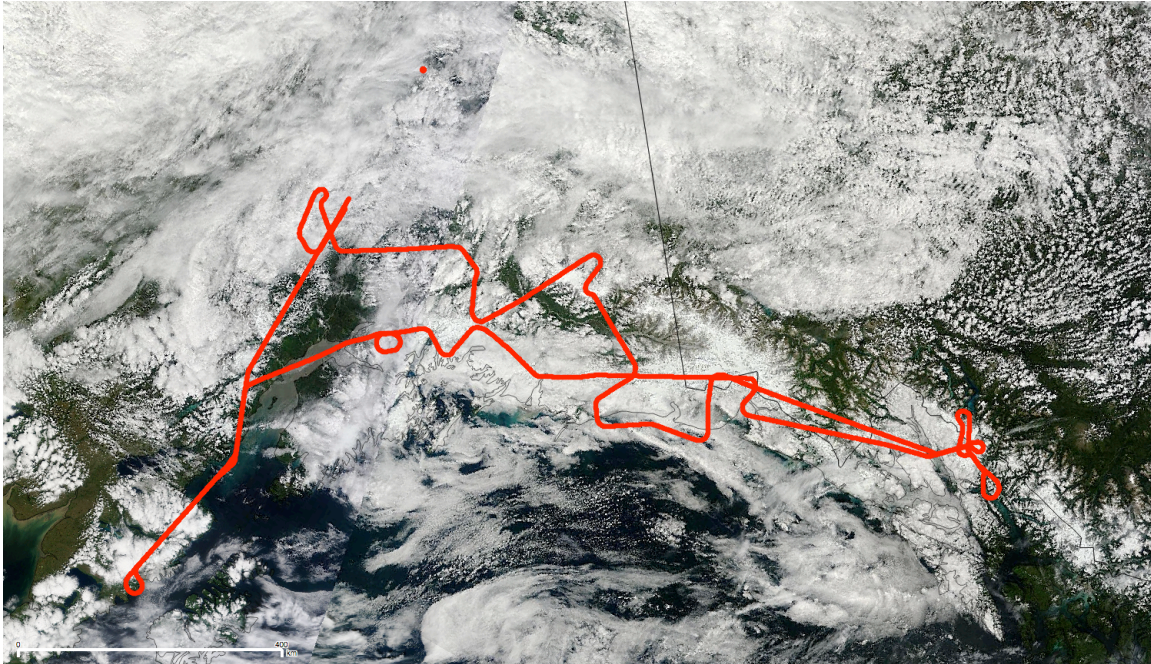


07/16/2014

Mission: 'Land Ice 1'



Weather: patchy clouds throughout.

Comments: Also included: CPL and the MABEL camera.

Best flight for Bagley Icefield, Seward, Llewellyn, Kennicott, and Nabesna glaciers, Redout Volcano, and Taslina Lake. Bagley Icefield, Seward and Nabesna glaciers also successfully acquired on 7/31.

ER-2

DAY flight; Etalon

Sample rate: 5 kHz

Energy levels throughout channels: variable.

FOV: 'Cluster FOV'

Points of interest:

Time (UTC)	Description
18:27:30	Laser status healthy
18:52:00	Volcano start
19:50:00	Volcano end
19:57:00	P/R maneuvers over water
20:44:00	Bagley Icefield start
20:58:45	Bagley Icefield end
21:32:30	Llewellyn Glacier start
21:39:30	Llewellyn Glacier end
23:08:00	Kennicott/Nabesna glaciers start
23:15:30	Kennicott/Nabesna glaciers start

23:34:30	Taslina Lake start
23:37:30	Taslina Lake end
00:19:00	Laser off