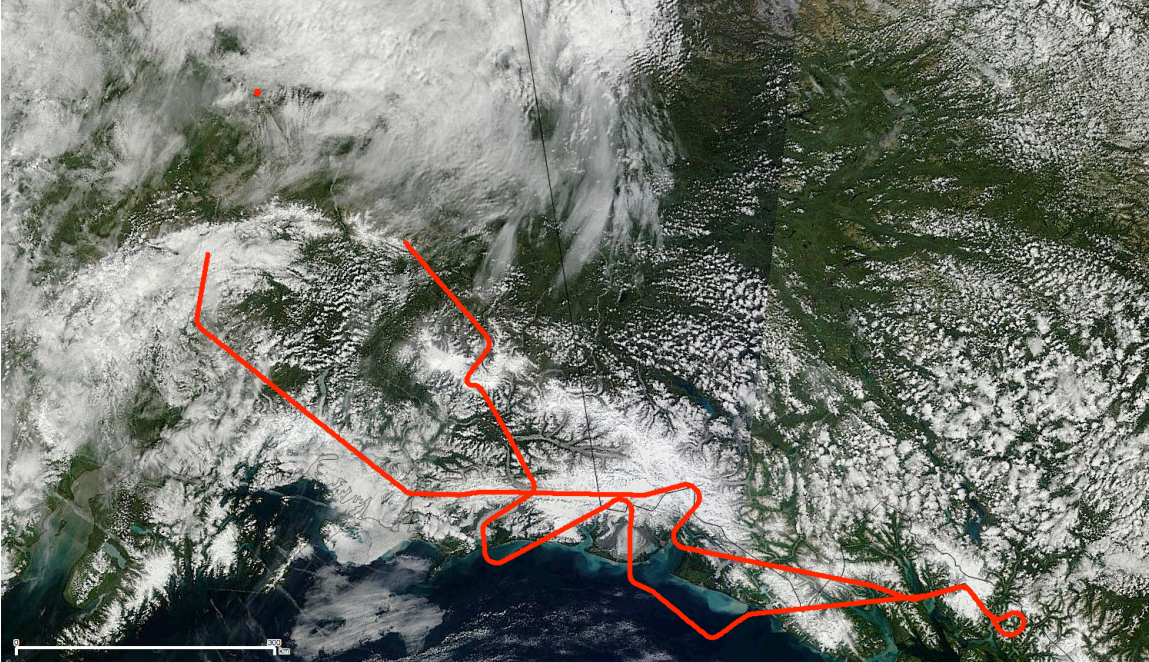


07/31/2014

Mission: 'Southeast cleanup'



Weather: patchy clouds on southeaster part of the flight.

Comments: Also included: CPL; MABEL camera failure.

Best flight for Miles, Hubbard, Malispina, and Bering glaciers, Gilkey and Taku glaciers, and auxiliary dataset for Bagley Icefield and Kennicott, Nabesna, and Seward glaciers (with 7/16).

ER-2

**DAY** flight; Etalon

Sample rate: 5 kHz

Energy levels throughout channels: variable.

FOV: 'Cluster FOV'

Points of interest:

Time (UTC)	Description
18:04:15	Laser status healthy
18:35:00	Miles, Bagley, Hubbard start
19:04:30	Miles, Bagley, Hubbard end
19:28:30	Gilkey and Taku start
19:49:30	Gilkey and Taku end
20:05:15	P/R maneuver starts somewhere in here
20:18:00	P/R maneuver ends somewhere in here
20:19:00	Malaspina and Seward start
20:24:30	Malaspina and Seward end
20:39:45	Bering start

20:48:00	Bering end
20:55:00	Kennicott and Nabesna start
21:04:00	Kennicott and Nabesna end
21:14:15	Laser off