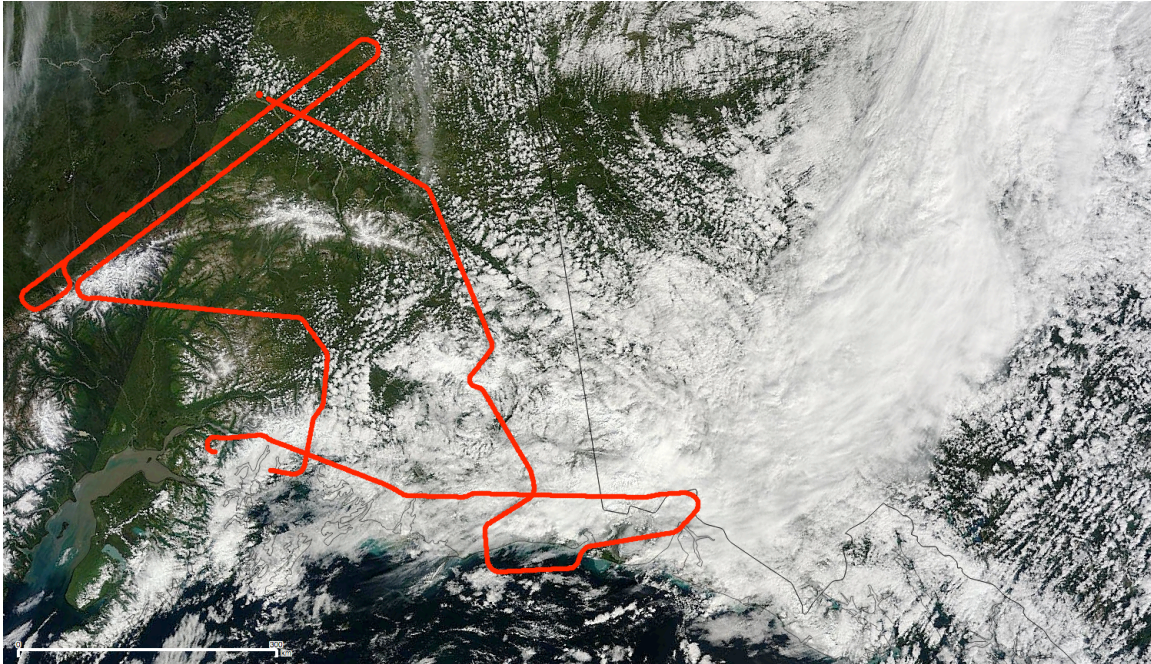


07/30/2014

Mission: 'South-central cleanup'



Weather: patchy clouds on southeaster part of the flight.

Comments: Both CPL and the MABEL camera experienced failures.

Best flight for G-LiHT lines 1 and 2 and Knick Glacier. This flight crosses the Kahiltna and Ruth glaciers.

ER-2

DAY flight; Etalon

Sample rate: 5 kHz

Energy levels throughout channels: variable.

FOV: 'Cluster FOV'

Points of interest:

Time (UTC)	Description
19:09:45	Laser status healthy
19:23:45	G-LiHT lines start
20:39:00	G-LiHT lines end
20:41:15	Kahiltna and Ruth glacier-crossings start
20:46:00	Kahiltna and Ruth glacier-crossings end
20:30:15	Knick Glacier start
21:33:30	Knick Glacier end
22:29:00	P/R maneuver over water
23:32:15	Laser off