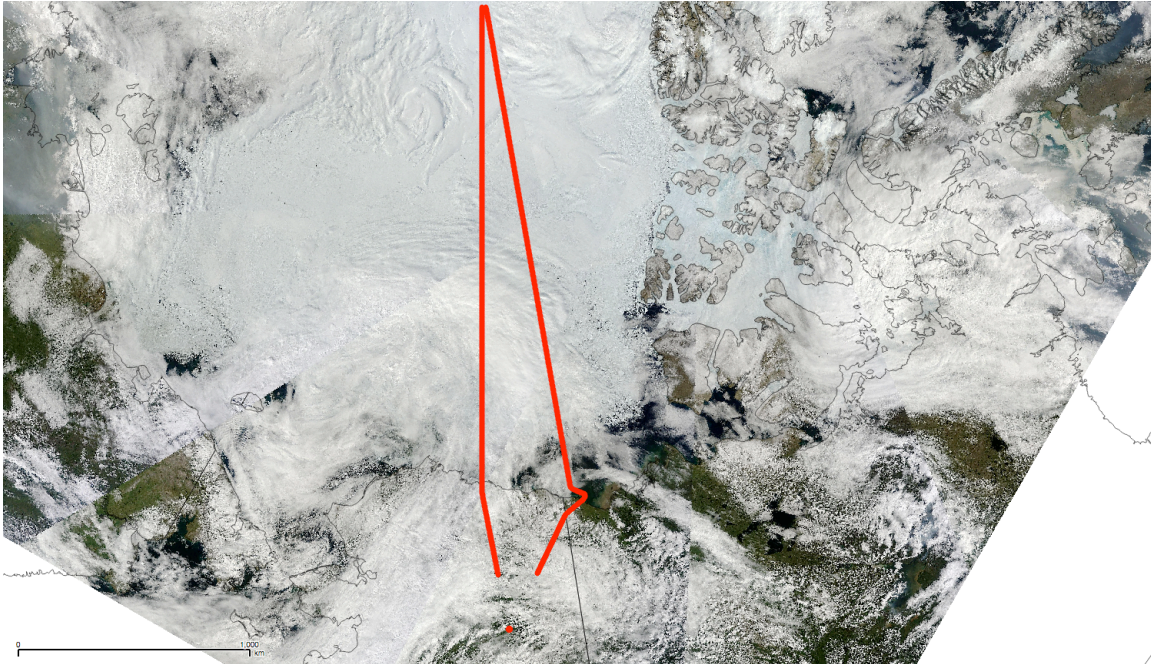


07/17/2014

Mission: 'Sea Ice 1'



Weather: patchy clouds throughout. Flight path was out on the 150* longitude line and returned on the 140* longitude line.

Comments: Also included: CPL and the MABEL camera.

Best flight for the 140* longitude line.

ER-2

DAY flight; Etalon

Sample rate: 5 kHz

Energy levels throughout channels: variable.

FOV: 'Cluster FOV'

Points of interest:

Time (UTC)	Description
19:24:30	Laser status healthy
22:40:00	P/R maneuvers over sea ice
01:47:00	P/R maneuvers over water
02:22:30	Laser off