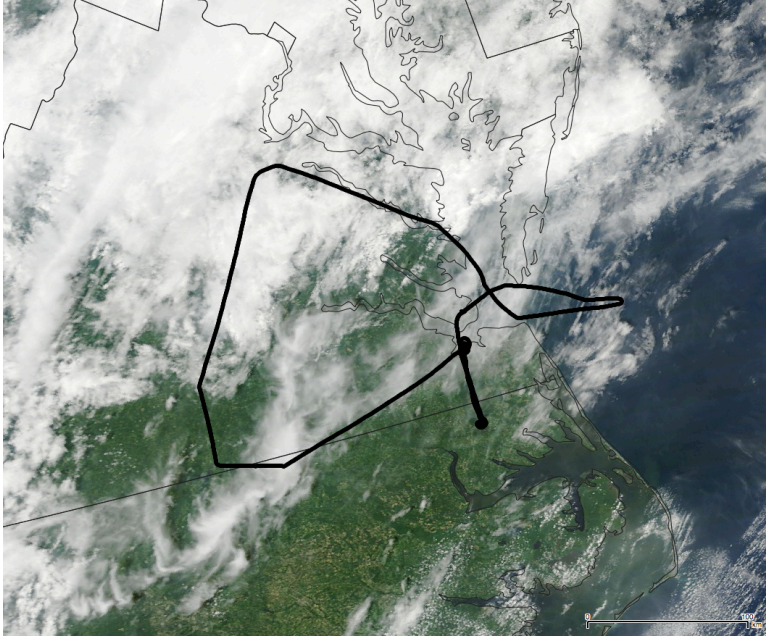


07/21/2015

**Mission: LaRC KING AIR ONLY (VA) 'Instrument Check Flight (ICF)'**



Weather: clouds over Corbin; major storms in the northern part of Chesapeake Bay

Instruments: SIMPL, Applanix, ASDs, nadir camera:  
ASD integrated but not run; Applanix had a hiccup, but fine; large spot on lense of camera

Day flight  
NASA Langley UC-12B (2.8 hours)  
Requested SIMPL sample altitude: **8,500 ft AGL (with variation for calibration)**

SIMPL points of interest:

Time (UTC)	Description
13:30	Applanix on
14:15	Variable altitudes AGL Start
15:00	Variable altitudes AGL End
16:25	P/R maneuver
16:41	P/R maneuver
17:15	Applanix off